

CHAMOT

Recombinant Human CXCL9

CM165-5HP
CM165-20HP
CM165-100HP
CM165-500HP
CM165-1000HP



CHAMOT

喬默生物技術(上海)有限公司
CHAMOT BIOTECHNOLOGY CO., LTD.

CONTENT

1 产品简介

2 产品组成

3 产品储存

4 产品使用

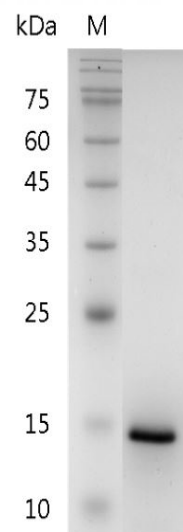
Recombinant Human CXCL9 (C-X-C motif chemokine 9)

编号:	CM165-5HP CM165-20HP CM165-100HP CM165-500HP CM165-1000HP	规格:	5 µg 20 µg 100 µg 500 µg 1 mg
类别:	重组蛋白	应用:	Functional Assay

产品简介

描述: CXCL9, also named Monokine, is a member of the CXC chemokine family and is induced by gamma interferon (MIG). Following induced by IFN-gamma, this chemokine can attract T-cells. CXCL9 has close relationship with two other CXC chemokines named CXCL10 and CXCL11, additionally they all elicit their chemotactic functions by interacting with the chemokine receptor CXCR3. CXCL9 is also a cytokine that affects the growth, movement, or activation state of cells participating in immune and inflammatory response and work as a chemoattractant of activated T-cells.

来源: *Escherichia coli*
纯度: >98% as determined by SDS-PAGE.
生物学活性: Measure by its ability to chemoattract human THP1 cells using a concentration range of 50-200 ng/mL.
内毒素检测: < 0.1 EU per 1 µg of the protein by the LAL method.
蛋白序列: TPVVRKGRCSISTNQGTIHLQSLKDL
 KQFAPSPSCEKIEIATLKNGVQTCLNP
 DSADVKELIKKWEKQVSQKKKQKNG
 KKHQKKKVLKVRKSQRSRQKTT
 with polyhistidine tag at the N-terminus



SDS-PAGE analysis of recombinant human CXCL9

产品组成

成分：从含有 1X PBS, pH 7.4 溶液中冻干的蛋白质.

产品储存/运输

产品形式	储存温度	储存时间
冻干粉	-20℃至-80℃	自收到之日起1年
重悬液（初始）	2℃至8℃	不超过1周
重悬液（经稀释）	-20℃至-80℃	3到6个月

运输方式：蓝冰

产品使用

- 1、开盖前，建议3000-3500rpm离心5min。
- 2、推荐使用无菌水重悬冻干粉，溶液浓度不低于100μg/mL，不高于1mg/mL，并室温静置至少20min以充分溶解。勿涡旋剧烈振荡。
- 3、重悬后的溶液，2-8℃无菌保存不超过1周。
- 4、如需长期保存，推荐使用无菌的含载体蛋白（如0.1%BSA、10%FBS或5%HSA）的溶液进一步稀释（不低于10ug/mL）后分装保存，-20℃至-80℃无菌保存3到6个月。无血清实验需求时，可更换为5%海藻糖溶液作为载体。避免反复冻融。

WB= Western Blot; IP= Immunoprecipitation; IF= Immunofluorescence; IHC= Immunohistochemistry;
FACS= Fluorescence activated Cell Sorting; FA= Functional Assay